



Philadelphia, PA
June 24-27, 2013

Bricks for a Lean Systems Engineering Yellow Brick Road

Ann Hodges

Sandia National Laboratories

alhodge@sandia.gov



Sandia National Laboratories is a multi-program laboratory managed and operated by Sandia Corporation, a wholly owned subsidiary of Lockheed Martin Corporation, for the U.S. Department of Energy's National Nuclear Security Administration under contract DE-AC04-94AL85000.





Yellow Brick Road

- A “Yellow Brick Road” is a fabled path to a promised land
 - Yellow bricks highlight the road
 - Road signage supports assessment of progress
- In the systems engineering (SE) world, achieving this fabled path of meeting the intended mission using
 - common SE framework implemented at the appropriate level of rigor
 - facilitates monitoring and achievement of a quality product





Bricks for Lean SE

Yellow Brick Road

- Common framework that integrates SE, project management, and quality management
- Right sizing project implementation of this framework
- Applying the framework as early as possible
- Further right sizing – tailoring and waiving
- Using project archetypes to inherit MA artifacts
- Providing a repository that contains reusable processes, plans, templates, examples, ...



Background

- Sandia National Laboratories (SNL) is a government-owned, contractor operated facility
- Defense Systems and Assessments (DS&A) Strategic Management Unit (SMU) within SNL
 - Provides technological solutions for global security
 - Focused on engineering and integrating advanced science and technology
 - Work spans from basic research to operational system development and operations
 - Customers demanding a higher level of quality assurance and discipline



What is Mission Assurance?

DoD's Definition

An activity that “exploits multiple overlapping programs that operate cohesively to ensure organizational processes are performed in accordance with the intended purposes or plans. It includes activities and measures taken to increase resiliency of essential capabilities and supporting infrastructure required for the DoD to carry out the National Military Strategy.”¹

¹US Department of Defense. 2013. “What is Defense Critical Infrastructure Program?” Accessed 1 March.
<http://dcip.dtic.mil/whatIsDCIP.html>



What is Mission Assurance?

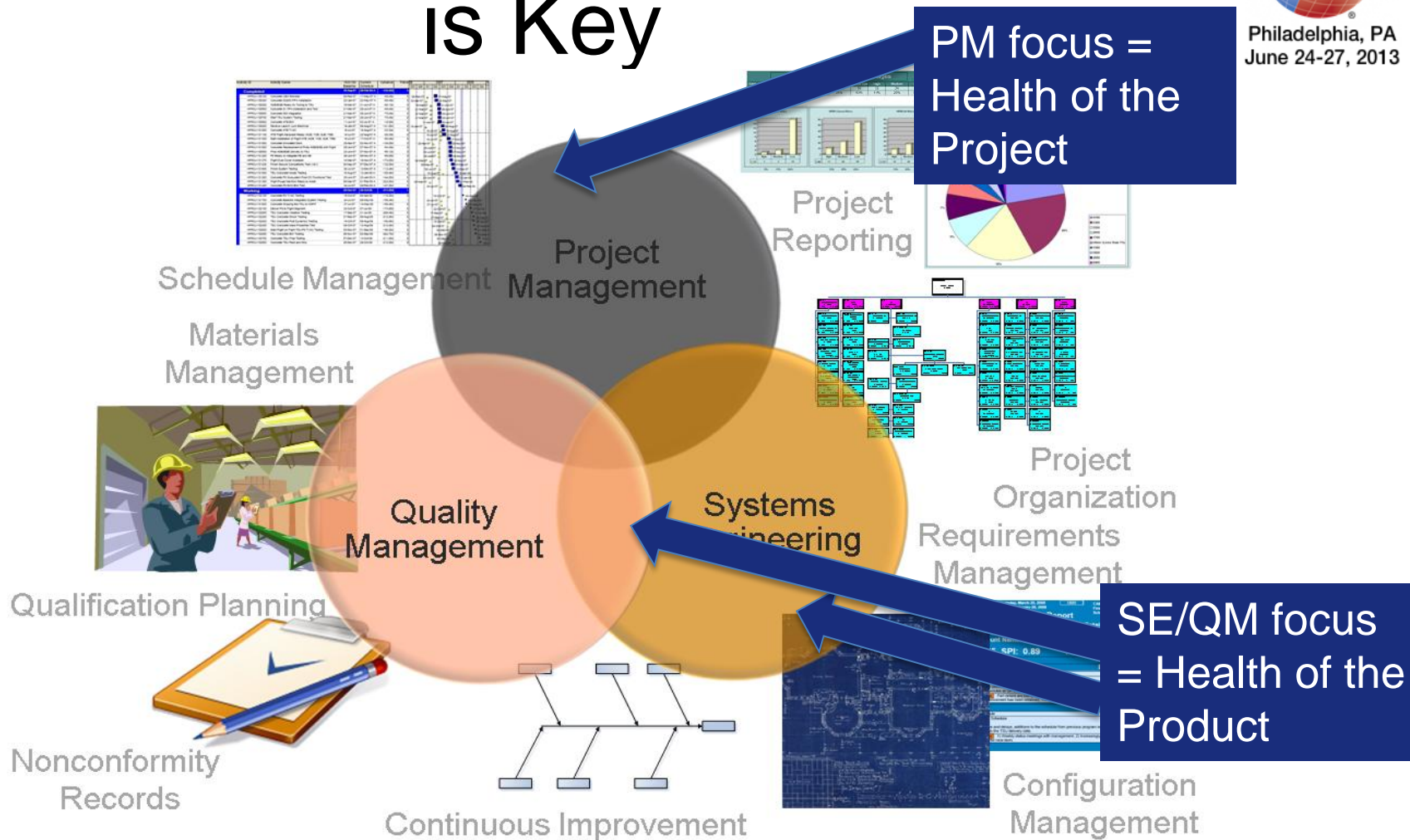
DS&A SMU's Definition

The DS&A SMU's definition of Mission Assurance (MA) is consistent with DoD's MA goal of successful mission support, but provides more specificity

- MA is the disciplined integrated application of program/project management (PM), quality management (QM) and systems engineering (SE) for the purposes of
 - delivering quality products and services to our customers to achieve mission success, and
 - provide management clear insight into the health of the project



Integration of PM, SE and QM is Key



Integration Leads to Increased Assurance of Mission Success





A Common MA Framework

- A consistent MA approach, tools and expertise
- Implementation flexibility
- Based on
 - Industry-standard techniques
 - Lessons learned/causal analyses and assessments



DS&A SMU MA Framework

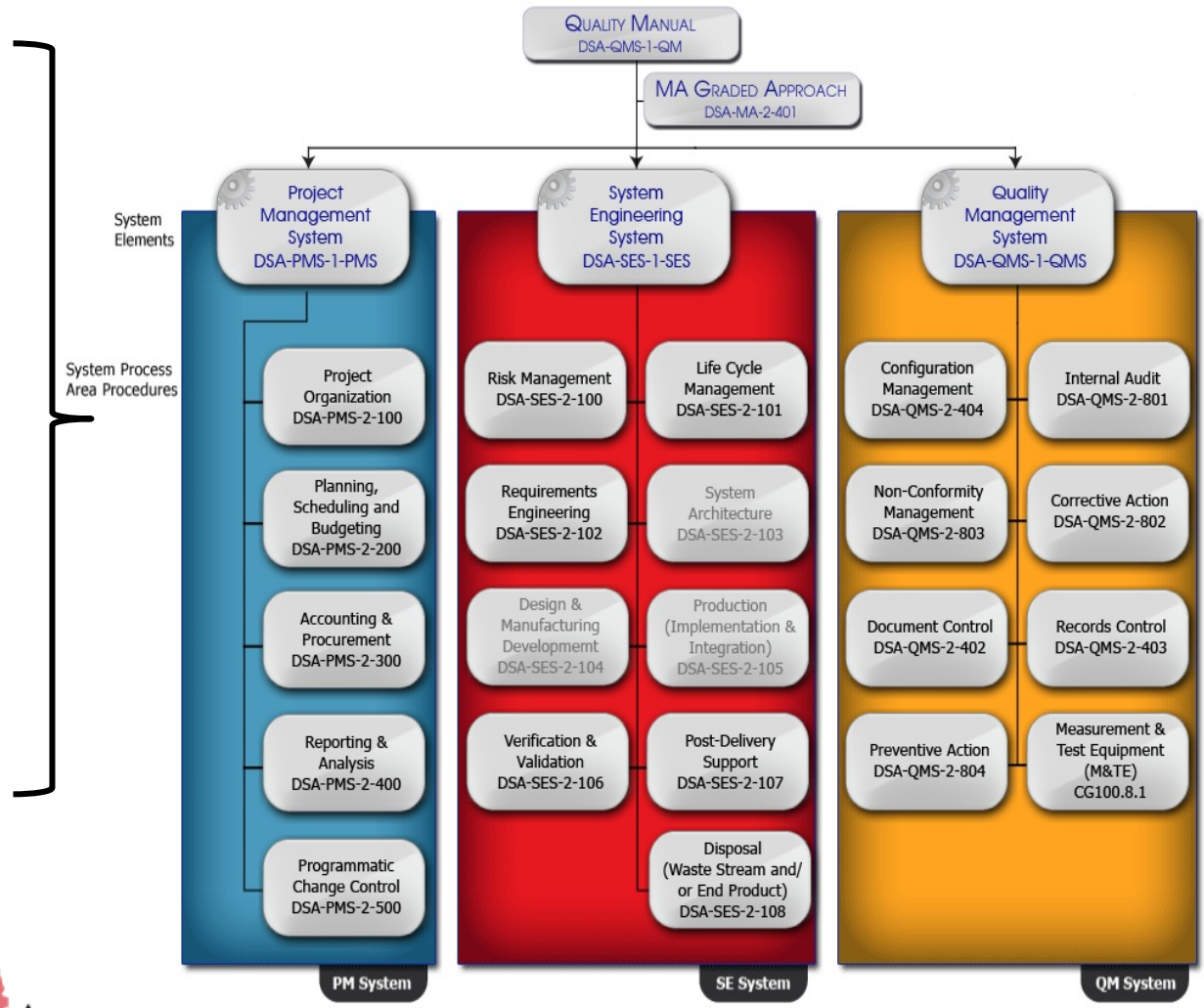


Mission Assurance System based on applicable Industry Standards

- PM System based on ANSI 748 and PMBOK
- Quality System based on AS9100C
- Systems Engineering based on ISO 15288
 - DoD Defense Acquisition University (DAU) Life Cycle

AND

- SNL Corporate Governance/Corporate Policies
- DOE O 414.1D





Right Sizing Project Implementation of the MA Framework

- The graded approach
 - Level of rigor determination template – “project categorization”
 - 10 questions
 - 4 levels of rigor
 - Risk informed
 - Project intrinsic characteristics
 - Useful at any point in the project’s life cycle
 - Recommend multi-disciplinary team (PM, technical lead) fill out template
 - Project manager signoff
 - Project MA Plan template for each level of rigor
 - Level of rigor attributes
 - Timing
 - Scope
 - Formality





Apply the MA FrameWork As Early As Possible

- PM, QM and SE activities are
 - Considered
 - Negotiated
 - Communicated
 - Planned
 - Budgeted
- Support informed decision making and communication of the project's MA requirements
 - Provides a means for projects to document their program/project requirements.
 - Provides management with a means of tracking and evaluating progress





Further Right Sizing

- Waive and tailor to fit business needs
- Core MA requirements cannot be waived
 - Follow MA framework graded approach
 - Project charter
 - Milestone list
 - WBS
 - Budget
 - Change order log
 - Requirements management approach
 - Risk management approach
 - Configuration management approach
 - Non-conformance/issues management





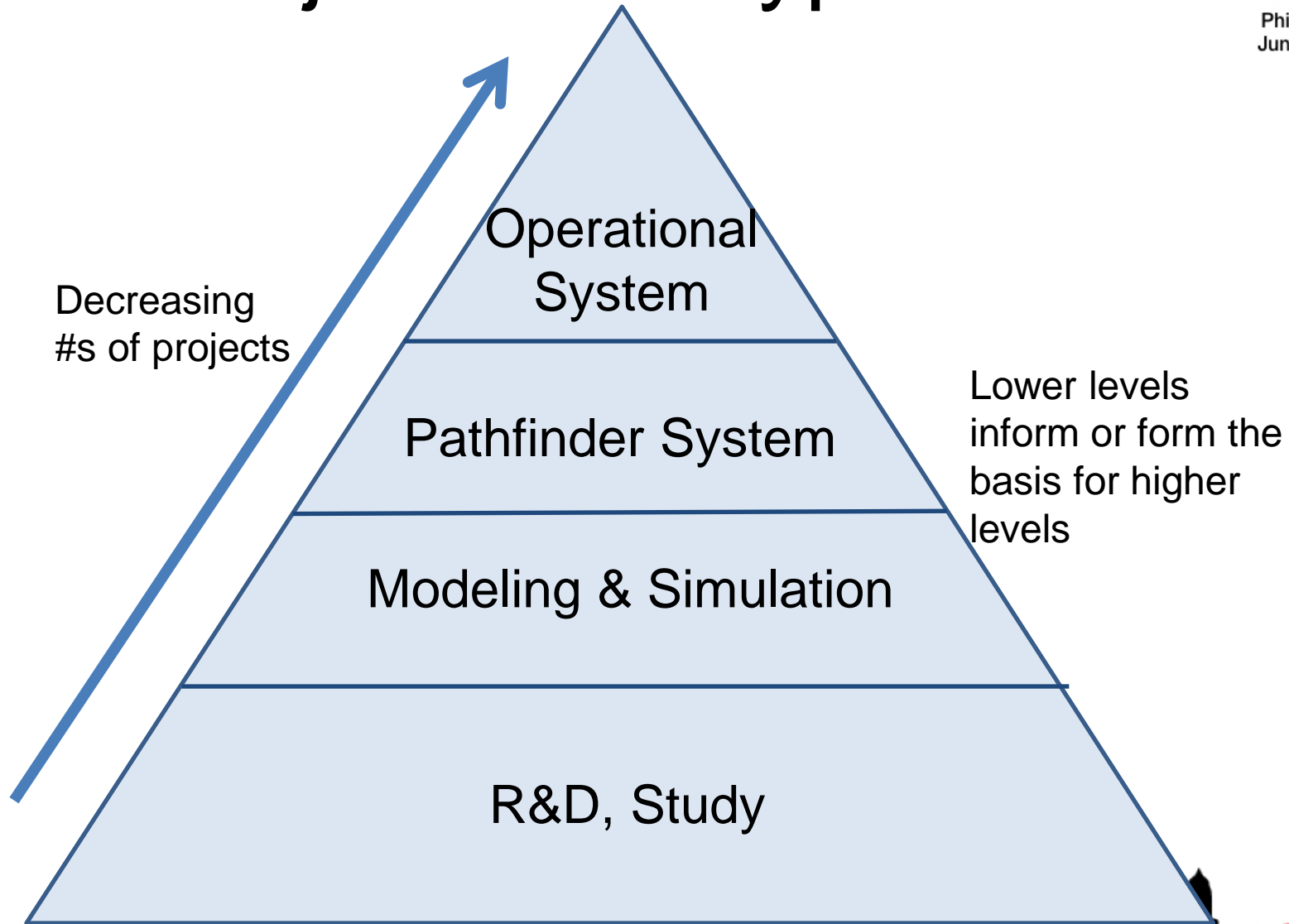
Further Learning

Project Archetypes

- Archetypes form basis for sharing MA artifacts
 - Project MA Plan, which includes generic processes and templates
- If a new project is “similar enough” to an archetype → inherit MA artifacts
 - Similarity is based on level of rigor determination template
- Projects may change archetypes during their life cycle



Project Archetypes



Project Archetypes Benefits

- Simplifies level of rigor determination and MA planning
- Facilitates tracking of core MA requirements completion
- Foundation for sharing processes and tools





Yellow Pages Repository

- Contents
 - Processes
 - Templates
 - Examples
 - Tool registry
 - Services
 - SMEs
- Navigable, searchable
 - Support different views via metadata and “roadmaps”
 - SE “V”, process area, project, level of rigor









Monitoring and Continuous Improvement

- Core MA requirements implementation status tracked for new projects
- Efficiency of project archetypes use
 - time to implement MA requirements with and without archetype usage
- Set of archetypes tracked for relevancy
- MA Community of Practice
- Best practices reflected in Yellow Pages
- Management review



Bricks Make “the *right* thing to do the *easier* thing”

-  Common framework that integrates SE, project management, and quality management
-  Right sizing project implementation of this framework
-  Applying the framework as early as possible
-  Further right sizing – tailoring and waiving
-  Using project archetypes to inherit MA artifacts
-  Providing a repository that contains reusable processes, plans, templates, examples, ...





Will We Get to Emerald City?

- Yes and No
 - Yes: The journey is made easier by leaning SE, PM and QM
 - No: Continuous improvement of the MA framework is a journey, not a destination



Acknowledgements

The author wishes to acknowledge other members of the DS&A Mission Assurance team, both past and present, who have contributed to the development and implementation of the DS&A MA framework

Mary Abt

Phil Chamberlain

Rick Glaspay

Barbara LaGree

Marlo Maxson

Mike Williamson

Tristan Thompson

Bobbie Surbey

Alexis Stenke



Questions?



Philadelphia, PA
June 24-27, 2013



Survey

Please take the time to rate this presentation by submitting the web survey found at:

www.incose.org/symp2013/survey

